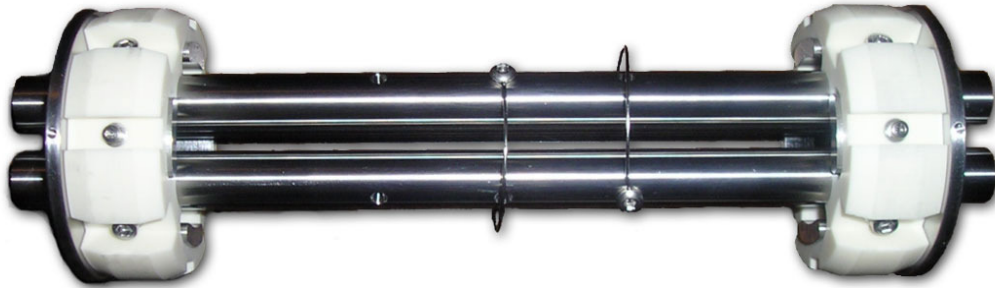


Quadrupole Mass Filters



- Wide range of sizes available:
 - 6 mm quadrupole with mass range to 10,000 amu.
 - 9 mm quadrupole with mass range to 4400 amu.
 - 12 mm quadrupole with mass range to 2500 amu.
 - 20 mm quadrupole with mass range to 900 amu.
- Quadrupoles come equipped standard with pre-filters for enhanced performance, with post-filters optional.
- Quadrupoles are equipped with isolated entrance and exit lenses, which utilize our standard 1.25-inch bolt circle, for compatibility with our full range of ionizers and ion optics, as well as for mounting to detector assemblies.
- Standard quadrupole lengths:
 - Analytical Quadrupole Length = 8.0 inches standard.
 - Pre-Filter Length = 2.0 inches standard.
 - Quadrupole design is customizable for OEM applications, with custom rod diameters and custom analyzer lengths possible.
- All connecting hardware is metric, for worldwide compatibility.
- Standard quadrupole housing has vent holes for gas conductance.
 - Super-vented housings are available as custom configurations.
- Materials of construction include stainless steel, aluminum oxide ceramic, glass-encapsulated vacuum-compatible resistors, and annealed nickel wire, for vacuum compatibility to 10^{-11} torr
- RF-only quadrupoles are also available in various lengths and rod diameters.

I. 12 MM QUADRUPOLE

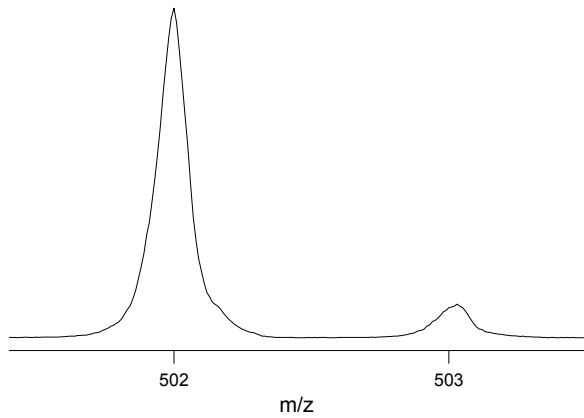


II. 6 MM QUADRUPOLE



III. 9 MM QUADRUPOLE

m/z 502 Ultimate Resolution = ~4150, 12 mm Quadrupole, 1.2 MHz



IV. 20 MM QUADRUPOLE

